

UNDERGRADUATE HANDBOOK 2019

ISN.EDU.AU

DETAILS

Bachelor of Psychology (Honours) BPsych (Hons)

Bachelor of Psychological Science (BPsychSci)

REGISTERED FULL-TIME DURATION:

4 Year Full-Time equivalent

TOTAL CREDIT POINTS:

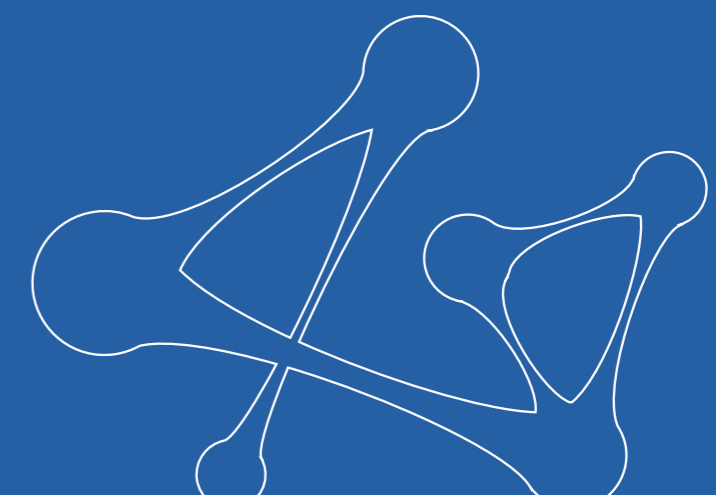
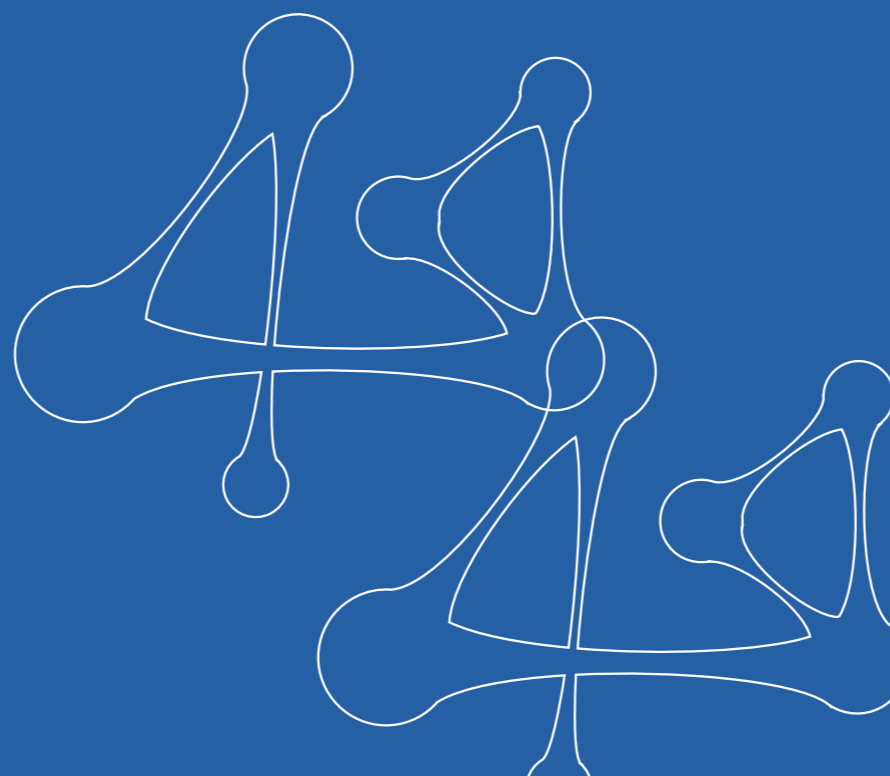
400

LOCATION:

ISN Psychology
Level 6, 10 Martin Street
Heidelberg
Victoria, 3084

CONTENTS

COURSE OVERVIEW	4
COURSE ENTRY DETAILS	8
COURSE ORGANISATION	13
COURSE DETAILS	30
FURTHER INFORMATION	31



THE COURSE OVERVIEW

The discipline of Psychology is evolving to incorporate more research from Neuroscience in clinical practice.

Our offerings in Social Neuroscience and Neuroscience will prepare our students with the knowledge to be leaders in the emerging field of neuropsychology and open additional career paths.

The Institute for Social Neuroscience aims to investigate the basis of character and temperament through the study of psychology, epigenetics, biochemistry, neuroscience, and ecology and to apply these findings to improving the health of individuals and societies. The discipline of Psychology is evolving to incorporate more research from Neuroscience in clinical practice. Our offerings in Social Neuroscience and Neuroscience will prepare our students with the knowledge to be leaders in the emerging field of neuropsychology and open additional career paths.

Graduates of the Bachelor of Psychology (Honours) are prepared for work in various settings through government, not-for-profit organisations, human resource management, market research, social welfare, social policy and research, human services and guidance or counselling for educational, vocational, or personal problems.

Graduates of the honours program are eligible to apply for associate membership with the Australian Psychological Society (APS), and those who meet the two-year supervision criteria for practice in Australia, as outlined within the Australian Health Practitioners Regulation Agency (AHPRA) guidelines, can apply for full registration as a psychologist. In Australia, it is a requirement to complete two years supervised psychological practice after fourth year to acquire general registration as a psychologist. This can be achieved through supervised work, through completion of a two-year professional master program in psychology, or a one-year professional postgraduate program and one year of supervised psychological practice.

In their fourth year, students will complete a research thesis that will develop their skills in critical evaluation and research findings.

ISN Psychology offers a Master of Psychology (Clinical) for eligible students and a Bachelor of Psychological Science (Honours) as a one-year standalone 4th year course for students who wish to complete the 4th year/honours at a later stage.

Students will complete a research thesis in 4th year that will develop skills in critical evaluation of research findings and evidence-based evaluations of treatment and management options. This, in addition to further postgraduate studies and/or 2 years' supervision, will prepare graduates for a career as a psychologist. The first three years of the Bachelor of Psychology (Hons) corresponds to AQF level 7 qualifications and the Honours component (4th year) corresponds to an AQF level 8 qualifications.

Students who do not meet entry requirements for the 4th year Honours stream (an aggregate of 60-69% across the 2nd and 3rd years of study) or do not wish to continue to 4th year with ISN Psychology will be exited with a Bachelor of Psychological Science (3rd year exit).

The Bachelor of Psychology (Hons) has received accreditation from the Australian Psychology Accreditation Council (APAC).

For further information about accreditation with conditions please visit: http://www.psychologycouncil.org.au/accreditation_reports or contact ISN directly on (03) 94456 9188.



PROFESSIONAL RECOGNITION

Graduates of the Bachelor of Psychology (Hons), four-year, program are eligible to apply for associate membership with the Australian Psychological Society (APS).

In Australia, it is a requirement to complete two years supervised psychological practice after fourth year prior to full registration as a psychologist as per the Australian Health Practitioners Regulation Agency (AHPRA) guidelines.

This can be achieved through supervised work in a professional psychology related role, through completion of a two-year professional master program in psychology, or a one-year professional masters and one year of supervised psychological practice.

Graduates undertaking the additional two years' supervision for full registration as a psychologist in Australia must register with AHPRA as a provisional psychologist.

ADDITIONAL COURSE EXPENSES

Additional expenses for hard copies of textbooks will be the responsibility of each individual student.

All lecture and tutorial materials will be available online and copying/scanning facilities are available, at a cost, for students on campus.

Details of student services fees, if applicable, will be made available on the ISN website and additional details regarding further materials will be provided prior to orientation week.





COURSE ENTRY DETAILS

Students applying for the Bachelor of Psychology (Honours) Degree are required to meet the following entry requirements:

YEAR 12 SCHOOL LEAVERS

For year 12 school leavers wishing to study psychology at undergraduate level the entry requirements are as follow:

- Completion of VCE Units 3 and 4 and a study score of at least 20 in one of the following:
 - Biology,
 - Chemistry,
 - Geography,
 - Mathematics,
 - Psychology or
 - Physics;
- Unit 1 and 2 Mathematics is preferred but not essential; and
- A study score of at least 25 in any English (except EAL) or at least 30 in English (EAL).

This criterion is assessed through submission of VCE certificates which applicants can upload via our [online application form](#).

NON-YEAR 12 APPLICANTS

All applicants must meet the equivalent of the VCE or year 12 school leaver prerequisites. Examples of equivalent prerequisites include:

- Studies completed at university level with a credit (60%+) average or above
- Diploma level studies with an average grade of 60% or above will also be considered.

Non-Year 12 applicants can provide evidence of further studies and work experience as part of their application for entry.

Please submit a certified copy of any official transcripts and/or VCE results and complete and submit a Personal Statement via our online application form.

The personal statement should be no more than 500 words and is used to assess an applicant's ability and aptitude to study psychology.

HURDLE ENTRY REQUIREMENT FOR YEAR 4/HONOURS

Students that have completed the first three years of an, APAC accredited, undergraduate degree in Psychology and meet minimum entry requirements are eligible for entry into a honours or 4th year in psychology.

Students who completed their first three years of study with ISN Psychology and meet minimum entry requirements will continue on in the Bachelor of Psychology (Honours).

Students who exited after the third year of study from ISN with a Bachelor of Psychological Science or the equivalent from another institute within the last 10 years are eligible to apply for a place in the Bachelor of Psychological Science (Honours).

A minimum credit average (60-69%) must be attained in 2nd and 3rd year psychology units of an APAC accredited psychology degree for eligibility of entry to a Bachelor of Psychological Science (Honours) or the final year of the Bachelor of Psychology (Honours).

Applicants or students with a credit average of 60-65% will be required to attend an interview as part of the application process and to assess aptitude for studies at 4th year level.

IMPORTANT DATES

16 November 2018	First Round Application Close
21 December 2018	First Round Offers
18 January 2019	Second Round Applications Close
31 January 2019	Second Round Offers
11 February 2019	Final Offers
4 March 2019	First Semester Commence

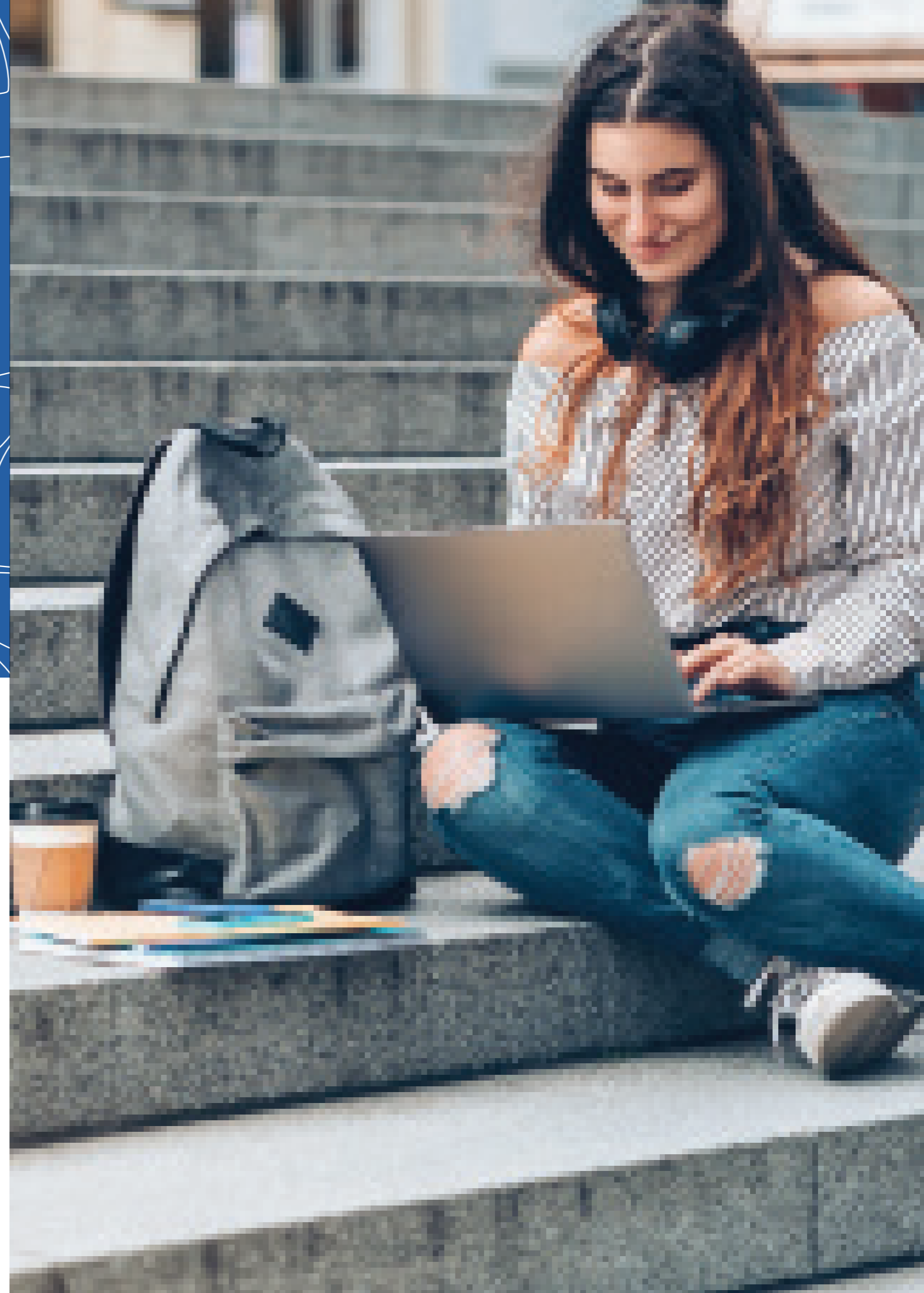
CREDIT FOR RECOGNISED PRIOR LEARNING

ISN will provide credit for any units undertaken as part of an Australian Psychological Accreditation Council (APAC) accredited sequence applicable to the current course being undertaken, as indicated in our Academic policies and procedures manual, and as referred to in the current APAC standards 5.1.9-5.1.11.

A copy of the APAC guidelines can be found at the following address:
www.psychologycouncil.org.au/education_provider_resources

PATHWAY TO FURTHER STUDY

Graduates of the Bachelor of Psychology (Hons) Degree may qualify for entry to other Graduate Certificates, Graduate Diplomas, Master by Coursework degrees, and Master or Doctorate by Research. ISN Psychology offers a Master of Psychology (Clinical) for students who meet entry requirements. Please see our policies and procedures or the postgraduate handbook for further details.



COURSE ORGANISATION

The Bachelor of Psychology (Honours) Degree consists of 24 compulsory or core units, four specialisation core units, and an elective in third year.

The specialisation units enable students to further specialise in Neuroscience as a minor area of study. The Honours year consist of one year full-time or equivalent part-time undertaken during the last year of study.

The fourth year of the Bachelor of Psychology (Hons) comprise of six core units of which two will focus on the completion of a major research project/thesis.

COURSE LEARNING OUTCOMES

Graduates at this level will have advanced theoretical and technical knowledge in one or more disciplines or areas of practice. Graduates will be able to demonstrate a broad and coherent knowledge of psychology and an appreciation of the value of applying this knowledge as the basis for life-long learning. Graduates will further demonstrate the capacity to apply disciplinary knowledge to explain, predict, and shape human behaviour.

ISN Psychology undergraduates will:

- Demonstrate the capacity to design and conduct studies to address psychological questions across a variety of domains.
- Be able to describe the key principles underpinning the design, implementation and evaluation of programs of behaviour change and be able to demonstrate the capacity to utilise logic, evidence, and psychological science to evaluate claims about, and solve problems regarding human behaviour.
- Demonstrate appropriate professional values and knowledge of the code of ethics.
- Have an understanding of the current Australian National Practice Standards for the Mental Health Workforce.
- Strong written and verbal communication skills and effective active listening and presentation skills.
- The ability to work autonomously and the ability to apply psychological principles to personal, social, organisational, and global issues.

COURSE STRUCTURE

The course structure is based on eight full-time semesters (each of 12 weeks' duration), with four units taught in each semester. The course comprises:

- 24 compulsory core units which provide an introduction to the key areas of psychology
- 4 specialisation core units in neuroscience
- 1 specialisation elective in neuroscience
- 1 psychology elective in the third year second semester

To qualify for the awarding of the degree of Bachelor of Psychology (Honours) a candidate shall accrue an aggregate of at least 400 credit points, including satisfactory completion of the core units.

This course is offered either full-time or part-time equivalent.



YEAR 1 (SEMESTER 1 & 2)

ISN101 INTRODUCTION TO PSYCHOLOGY 1

Introduction to Psychology 1 provides students with basic knowledge about psychology. More specifically, this unit will introduce students to the key concepts and theories in the areas of biological, cognitive, and developmental psychology.

ISN102 INTRODUCTION TO PSYCHOLOGY 2

Introduction to Psychology 2, in conjunction with Introduction to Psychology 1, provides students with a basic understanding and knowledge of psychology. More specifically, this unit will introduce students to the key concepts and theories in the areas of history and philosophy of psychology, research, personality, and individual differences, clinical and abnormal psychology, and social psychology.

ISN103 PSYCHOLOGY RESEARCH AND THE PSYCHOLOGY PROFESSION

The Psychology Research and the Psychology Profession unit will equip students with the knowledge to describe and ethically apply a range of experimental and non-experimental research designs in applied psychological research. Students will learn to explain the organisation and regulation of psychology as a discipline in Australia, explore the range of research paradigms including qualitative and quantitative methodologies, and understand the ethical implications for completing psychological research.

ISN104 BIOLOGICAL FOUNDATIONS OF PSYCHOLOGY

The Biological Foundations of Psychology unit serves as an introduction to the neurobiological bases of behaviour. As such, students will be introduced to the fundamental principles of brain and nervous system functioning, including the neuroanatomy and function of the nervous system, neuron structure and function, electrical and chemical signalling, and genetics. The examination of these basic principles will facilitate an understanding of more complex behaviours such as motivation, reproductive behaviours, and states of consciousness.

ISN111 HISTORY AND PHILOSOPHY OF PSYCHOLOGY

In History and Philosophy of Psychology, students will investigate the roles that history and philosophy plays in understanding and practicing psychology in past and current times. Students will describe the historical roots of modern psychology and identify the main influences, develop the ability to apply historical and philosophical thinking to psychological issues in everyday life, and critically evaluate the contributions of the psychology discipline to the major philosophical questions relevant to modern society.

ISN112 LEARNING AND MOTIVATION

Learning and Motivation will teach students to describe and critically evaluate the main theories and research underlying learning and motivation; and the most important applications of research in the areas of learning and motivation. Students will work through case studies associated with the major forms of psychopathologies and explore treatment options in terms of clinical efficacy and demonstrate an awareness of the applied learning and motivation theories to everyday settings.

ISN113 PSYCHOLOGY STATISTICS 1

In Psychology Statistics, students will acquire a fundamental understanding of the following areas of statistics as applied to psychology: descriptive statistics, inferential statistics, using statistics to make inferences about one, two, or more than two populations. Students will further develop a logical problem-solving approach to answer various research questions, develop a working knowledge of the main functions of the current statistical packages and application of statistical software programs to answer specific hypotheses associated with various data sets, and the ability to calculate and interpret statistical data.

ISN114 FOUNDATIONS OF NEUROSCIENCE

Foundations of Neuroscience builds further on the structural features and functional principles of the nervous system introduced in ISN104 (Biological Foundations of Psychology) and will explore the functional systems related to movement, sensation, perception, and memory. The biological basis of other complex behaviours such as learning, language and intelligence, emotion, reward, and aggression will also be examined within this framework, such that students will develop an understanding of the relationship between neurobiological and psychological functioning and dysfunction.

YEAR 2 (SEMESTER 1 & 2)

ISN201

SOCIAL PSYCHOLOGY

Social Psychology will develop a systematic understanding of the behaviour of individuals in social interactions within a cultural context. Students will learn to critically evaluate the many theoretical explanations of various social behaviours including: social self, social cognition, attributions, social influence and persuasion, stereotypes, prejudice and discrimination, aggression, altruism, competition and cooperation within groups.

ISN202

HUMAN NATURE 1: EVOLUTIONARY PSYCHOLOGY

In Evolutionary Psychology, students will be introduced to Charles Darwin's theory of evolution and how it can be used to understand behaviour. More specifically, topics covered will include the foundations of evolutionary psychology (past and present), natural selection, human survival, and hostile forces of human nature; the challenges of sex and mating; and the challenges of parenting and kinship. The unit will develop understanding of the ethical, moral, scientific, and philosophical implications related to a set proposition.

ISN203

RESEARCH METHODS

Research Methods introduces students to quantitative advanced research methods including: ANCOVA; MANOVA; discriminant function analysis; regressions and structural equation modelling; and data reduction via factor and cluster analysis. Qualitative research methodologies such as grounded theory and, and discourse analysis will be taught.

ISN204

CULTURES AND PSYCHOLOGY

The Culture and Psychology unit will increase understanding of the different methodological approaches (including emic and etic) to cross cultural comparison research; the challenges of using cross cultural data to legitimately compare behaviour across cultures; and the impact of culture on all aspects of human behaviour. The following issues associated with cultural research will be discussed: nature versus nurture, universal versus individual; issues of cultural bias; and the impact of stereotypes, prejudice and discrimination in psychological literature and practice.

ISN211

DEVELOPMENTAL PSYCHOLOGY

Developmental Psychology will develop students understanding of the major developmental theories and how they relate to the fundamental issues of life span development. The unit will prepare students to integrate the major areas of development to the major stages of the life span, and critically review and evaluate topical issues associated with lifespan and developmental psychological literature.

ISN212

PERCEPTION, COGNITION, AND LANGUAGE

The Perception, Cognition, and Language unit will focus on the complex interactions between the major psychological concepts of perception, attention, memory, cognition, problem solving and language. The following issues will be emphasised: universal origins of language acquisition, nature versus nurture, evolutionary influences on cognition and language, communication within the social context, and how the mind works.

ISN213

INDIVIDUAL DIFFERENCES AND PERSONALITY

Individual Differences and Personality will focus on developing students' awareness of the range of conceptual variables involved in individual psychological differences, including heredity, social influences, and cultural context. Students will explore various concepts involving individual differences (e.g., intelligence, personality, abilities), along with the challenges involved in constructing, interpreting, and applying tests that measure these concepts (e.g., reliability, validity, and factor structure).

ISN214

HUMAN NATURE 2: SOCIAL NEUROSCIENCE

Social Neuroscience will introduce students to the methods of Social Neuroscience, the evolutionary origins of social intelligence and culture, face, and body perception, interacting with and understanding others, relationships, groups and identity, morality and antisocial behaviour, and developmental social neuroscience. Students will explore an aspect of human nature and review arguments for and against a prescribed proposition using social neuroscience as a basis, and understand the neuroscientific implications related to a set proposition.



YEAR 3 (SEMESTER 1 & 2)

ISN301

APPLIED PSYCHOLOGY AND THE PSYCHOLOGY PROFESSION

Applied Psychology and the Psychology Profession will teach students how the basic psychological processes are relevant to several applied contexts: clinical; counselling; health; forensic; educational; organisational; engineering; consumer; environmental; political; and space. Students will critically evaluate the organisation and regulation of psychology in Australia, the impact of applied psychology in key areas of such as work, education, and life, along with the key literacies necessary to be an effective applied psychological professional. Students will develop the ability to formulate a comparative analysis of the contribution of applied psychology to clinical, counselling, health, forensic, educational, organisational, engineering, consumer, environmental, and political settings.

ISN302

ABNORMAL PSYCHOLOGY

The Abnormal Psychology unit will introduce students to concepts of normality, abnormality, and mental illness. Methodologies used to study, describe, and treat the major forms of psychopathology within legal, ethical, and professional frameworks will be covered. Students will learn to demonstrate an understanding of the therapeutic processes presented in a variety of psychotherapy models by working through case studies associated with the major forms of psychopathologies and explore treatment options in terms of clinical efficacy.

ISN303

BASICS OF PSYCHOLOGICAL ASSESSMENT

Basics of Psychological Assessment will develop an awareness of the range of psychological assessments currently used in Australia, as well as introducing current major assessment tools in each of the following psychological domains: personality, intelligence (child to adult), psychopathology, and organisational selection. Students will learn the assessment process, covering the principles of assessment, the assessment interview, and linking assessment to planning treatments and report writing.

ISN304

HUMAN NATURE 3: BEHAVIOURAL ECONOMICS AND CIVILISATIONS

Behavioural Economics and Civilisations will introduce students to the concepts of behavioural economics and civilisation in the contexts of psychological factors underlying economic drivers, the interplay with biology, the role of history and genetic inheritance in social cohesion and economic development, the prosperity and stagnation of civilisations, understanding the psychological and physiological drivers of civilisation and prevailing views of society.

ISN311 CHILDHOOD AND ADOLESCENCE

Childhood and Adolescence focuses on understanding the development of children and adolescents using a biopsychosocial (i.e., biological, cognitive, emotional, social, and environmental) approach. Students will explore the major research strategies used in developmental psychology associated with children and adolescents, critically evaluate the major developmental theories as they relate to child and adolescent development and apply theory-driven psychological research to key developmental topics during this period.

ISN312 RESEARCH PROJECT

Students undertaking a Research Project will develop a research question, formulate hypotheses, and outline a methodology (including appropriate statistical tests) to complete an individual research project (mini-thesis). Students will demonstrate the logic of developing a research question and planning a research methodology to successfully answer that research question. In doing so, students will individually complete all phases of a research project including conducting a literature review, development of unique hypotheses, identifying participants and appropriate measures, completing the data collection and data analysis, reporting and discussing research findings, and culminating in the submission of a “ready for publication” research paper.

ISN313 COUNSELLING THEORIES

In Counselling Theories, students will learn to critically examine the theoretical and philosophical frameworks underpinning various counselling approaches used in contemporary psychological practice. The unit will critically analyse the dynamic interaction processes within counselling. Students will apply communication skills in the assessment, planning, implementation, and evaluation stages of the counselling process. There will be critical evaluations of the key issues associated with counselling approaches including Psychodynamic, humanistic-existential, behavioural, and more recent therapies (solution-focused, narrative, positive, mindfulness) as applied to differing client groups (including gender and culture).

ISN314 CLINICAL NEUROSCIENCE

Elective - Clinical Neuroscience introduces theories and research on topic including the neural bases of cognition, development and the emergence of behaviour, seizures and epilepsy, disorders of mood and anxiety, disorders of thought and volition, autism and other neurodevelopmental disorders, disorders of conscious and unconscious mental processes and repairing the damaged brain. Students will develop an understanding of key methodologies for investigating brain dysfunction, skills in completing research in one of the areas of clinical neuroscience such as bionics, stroke, epilepsy, neurogenetics, and develop skills in report writing applied to clinical neuroscience.

ISN315 ARTIFICIAL INTELLIGENCE AND APPLIED BIOENGINEERING

Elective - Artificial Intelligence and Applied Bioengineering introduces students to concepts around artificial intelligence (AI), whether machines can “think”, sensory input in machine systems, the nature of consciousness, culturing of human neurons, bionics, and human machine interface, repairing brain and behaviour. Students will develop an understanding of key methodologies for investigating bionics and AI, as well as reviewing arguments for and against a prescribed proposition using psychology and neuroscience as a basis.

YEAR 4 (SEMESTER 1 & 2)

ISN401

LIFESPAN DEVELOPMENT AND PSYCHOPATHOLOGY

Lifespan Development and Psychopathology offers a systematic developmental overview and analysis of the major theories relating to various psychopathologies across the lifespan. Along with an increased understanding of psychopathologies, students will learn the key concepts, strengths and limitations of influential developmental theories as applied within psychopathological settings.

ISN402

PSYCHOLOGICAL ASSESSMENT

Psychological Assessment involves learning the major steps in psychological assessment including: context, interview, behavioural observation, formal testing, interpretation, and creating a psychological report. Students will be introduced to the various types of assessment tools and become familiar with the general content domains of each type, and work through the parameters associated with test development and evaluation.

ISN403

RESEARCH METHODS

Research Methods introduces students to quantitative advanced research methods including: ANCOVA, MANOVA, discriminant function analysis, regressions and structural equation modelling, and data reduction via factor and cluster analysis. Qualitative research methodologies such as grounded theory and discourse analysis will be taught. Students will demonstrate the ability to use established data sets to complete various quantitative and qualitative analyses, along with a mixed method analysis and a report integrating both data sets. Critical decision making and understanding the issues within statistics and design is required to ensure completion of appropriate qualitative and quantitative analyses.

ISN404

RESEARCH THESIS 1

In conjunction with a thesis supervisor, students in Research Thesis 1 will develop a research question and embed this research question within the current literature, develop testable hypotheses and propose an appropriate methodology (including participants, measures and procedures). Students will develop adequate statistical justification for complete data analysis of the thesis project, describe all possible ethical issues associated with psychological research and

determine which ones apply to their thesis and how they will satisfy ethical requirements. Students must complete appropriate documentation for ethics and achieve ethical clearance of proposed research. Students will practice effective verbal and written communication of concepts and research in psychology

ISN411

CONTEMPORARY PROFESSIONAL PSYCHOLOGY

Contemporary Professional Psychology presents the issues and role of professional psychologists in contemporary Australia. This unit describes the role of the Australian Health Practitioner Regulation Agency (AHPRA), professional frameworks and decision-making, professional competence, role of the regulatory board and the need for continuing professional development. Students will study theories associated with interviewing and basic counselling of diverse populations, develop their basic interviewing and counselling skills, and demonstrate basic interviewing and counselling skills on fellow students by presenting a videotaped session with a critical written analysis.

ISN412

RESEARCH THESIS 2

Continuing from Research Thesis 1, in Research Thesis 2 students will prepare and complete a research thesis (totalling 10,000 words). Students will write an introduction that critically analyses the current research literature and justifies their study and hypotheses. Students will complete a methods section that clearly outlines participants, psychometrics of the measures, and the procedures used to collect data.

Students will collect and analyse data within the context of the psychological research project and report the outcomes of statistical tests in the results section of the research thesis. They will complete an extensive discussion of research findings, a critical comparison with past literature, a critical analysis of the strengths and limitations of this research and provide suggestions for future research and potential applications for the findings. Students will practice effective verbal communication by preparing and presenting a poster and delivering a 15-minute research presentation.

YEAR 1

See the break down of units, study hours per week and the credit points you'll gain in your first year.

SEMESTER 1

COURSE STRUCTURE	HOURS PER WEEK	CREDIT
ISN101 Introduction to Psychology 1	4.0 Formal 6.0 Self Study	12.5
ISN102 Introduction to Psychology 2	4.0 Formal 6.0 Self Study	12.5
ISN103 Psychological Research and the Psychology Profession	4.0 Formal 6.0 Self Study	12.5
ISN104 Biological Foundations of Psychology	4.0 Formal 6.0 Self Study	12.5
		50

SEMESTER 2

COURSE STRUCTURE	HOURS PER WEEK	CREDIT
ISN111 History and Philosophy of Psychology	4.0 Formal 6.0 Self Study	12.5
ISN112 Learning and Motivation	4.0 Formal 6.0 Self Study	12.5
ISN113 Psychological Statistics 1	4.0 Formal 6.0 Self Study	12.5
ISN104 Foundations of Neuroscience	4.0 Formal 6.0 Self Study	12.5
		50

YEAR 2

See the break down of units, study hours per week and the credit points you'll gain in your second year.

SEMESTER 1

COURSE STRUCTURE	HOURS PER WEEK	CREDIT
ISN201 Social Psychology	4.0 Formal 6.0 Self Study	12.5
ISN202 Human Nature 1: Evolutionary Psychology	4.0 Formal 6.0 Self Study	12.5
ISN203 Research Methods	4.0 Formal 6.0 Self Study	12.5
ISN204 Cultures and Psychology	4.0 Formal 6.0 Self Study	12.5
		50

SEMESTER 2

COURSE STRUCTURE	HOURS PER WEEK	CREDIT
ISN211 Developmental Psychology	4.0 Formal 6.0 Self Study	12.5
ISN212 Perception, Cognition and Language	4.0 Formal 6.0 Self Study	12.5
ISN213 Individual Differences and Personality	4.0 Formal 6.0 Self Study	12.5
ISN214 Human Nature 2: Social Neuroscience	4.0 Formal 6.0 Self Study	12.5
		50

YEAR 3

See the break down of units, study hours per week and the credit points you'll gain in your third year.

SEMESTER 1

COURSE STRUCTURE	HOURS PER WEEK	CREDIT
ISN301 Applied Psychology and the Psychology Profession	4.0 Formal 6.0 Self Study	12.5
ISN302 Abnormal Psychology	4.0 Formal 6.0 Self Study	12.5
ISN303 Basics of Psychological Assessment	4.0 Formal 6.0 Self Study	12.5
ISN304 Human Nature 3: Behavioural Economics and Civilisation	4.0 Formal 6.0 Self Study	12.5
		50

SEMESTER 2

COURSE STRUCTURE	HOURS PER WEEK	CREDIT
ISN311 Childhood and Adolescence	4.0 Formal 6.0 Self Study	12.5
ISN312 Research Project	4.0 Formal 6.0 Self Study	12.5
ISN313 Counselling Theories	4.0 Formal 6.0 Self Study	12.5
Elective: ISN314 Clinical Neuroscience or ISN315 Artificial Intelligence and Applied Bioengineering	4.0 Formal 6.0 Self Study	12.5
		50

YEAR 4

See the break down of units, study hours per week and the credit points you'll gain in your fourth year.

SEMESTER 1 (HONOURS)

COURSE STRUCTURE	HOURS PER WEEK	CREDIT
ISN401 Lifespan Development and Psychopathology	4.0 Formal 6.0 Self Study	12.5
ISN402 Psychological Assessment	4.0 Formal 6.0 Self Study	12.5
ISN403 Research Methods	4.0 Formal 6.0 Self Study	12.5
ISN404 Research Thesis 1	4.0 Formal 6.0 Self Study	12.5
		50

SEMESTER 2 (HONOURS)

COURSE STRUCTURE	HOURS PER WEEK	CREDIT
ISN411 Contemporary Professional Psychology	4.0 Formal 6.0 Self Study	12.5
ISN412 Research Thesis 2	4.0 Formal 6.0 Self Study	37.5
		50

DURATION AND AVAILABILITY

The Bachelor of Psychology (Hons) is four years' full-time or equivalent part-time study.

YEAR	LOCATION	PERIOD	INTERNAL	EXTERNAL
2019	ISN Psychology (Heidelberg)	Semester 1	☑	☒
2019	ISN Psychology (Heidelberg)	Semester 2	☑	☒

The information displayed above refers to study periods and locations where the course is available for first time entry. Students are normally only offered or admitted to a course once.

Course and associated units DO NOT permit International Onshore student enrolment.

Course Structure Disclaimer

ISN Psychology reserves the right to modify or amend course content and structure to ensure appropriate and relevant learning outcomes. In instances where modifications are made to course content or structure, current students will not be impacted and allowed to complete the course within the set timeframe and at no additional cost.

Disclaimer

The information contained in this handbook is correct at the time of publication, however may be subject to change.

ISN Psychology reserves the right to change the content of courses and units, including methods of assessment, and to make amendments to course fees. ISN Psychology has the right to set enrolment limitations and, at their discretion, have alternative provisions for course completion.

COURSE DATES

SEMESTER 1

4 March	Classes Commence
15 April	Mid Semester Break
31 May	End of Classes
10 June	Exam Period
28 June	Semester Break


SEMESTER 2

29 July	Classes Commence
9 September	Mid Semester Break
25 October	End of Classes
4 November	Exam Period
22 November	Semester End

FURTHER INFO

For further information in regard to academic policies and procedures please refer to the ISN Psychology Policies and Procedures Handbook.

If you need assistance or further course information, please contact our office:

 (03) 9456 9188

 reception@isn.edu.au


 isn.edu.au

CONNECT WITH US

Facebook: @ISNpsych

Instagram: @isnpsych



 (03) 9456 9188

 info@isn.edu.au

 isn.edu.au