

GRADUATE DIPLOMA OF PSYCHOLOGICAL STUDIES



The background is a dark, almost black, gradient. On the left side, there are several overlapping, semi-transparent shapes in shades of purple and blue. These shapes are organic and fluid, resembling liquid or smoke. One large, bright purple shape is prominent on the left, with a smaller, lighter blue shape overlapping it. The overall effect is a modern, artistic, and somewhat ethereal aesthetic.

**Creating thriving minds
for an evolving world**

A Message From Professor Tony Paolini, President and CEO

As you embark on this exciting journey of higher education in the field of psychology, we'd be thrilled to have you join our community of passionate learners and educators.

State-of-the-art technology combined with our extensive facilities ensures that our student experience is accessible, engaging, and constantly evolving. Our psychology courses are all approved by APAC. A testament to our commitment to maintaining the highest standards of education and practice.

As you consider taking the next step in your career and advancing your education with us, know that our dedicated staff is here to guide you every step of the way. We are excited about the opportunities that await you at ISN Psychology and look forward to witnessing your growth and achievements.

We respectfully acknowledge the traditional owners of the land in which ISN operates, the Wurundjeri People of the Kulin Nation, and pay our respects to their Elders past, present and emerging.

Why Choose ISN Psychology?

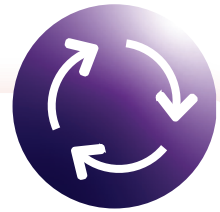
We're a TEQSA approved Institute of Higher Education dedicated to fostering thriving minds in an evolving world. We're committed to advancing the field of psychology through comprehensive education, innovative research, and creating an academic experience that caters to the diverse needs of our students. We offer live face-to-face and online coursework options from our Ivanhoe campus as well as in our work integrated learning hubs in Melbourne and Sydney.

At ISN we believe that learning extends beyond the classroom.

Through our extensive clinical facilities and broader psychology network our students gain leading edge practical training and placements, equipping them with the skills they need to excel in their careers.

The ISN team includes experienced clinicians who have worked in a range of public and private settings, and educators who have held leadership roles in both academic and professional settings.

Comprehensive and Flexible



We utilise the latest technology and have extensive facilities to ensure a holistic learning experience. Intakes in semesters one and two. Full and part time sequences available.

Exceptional Clinical Facilities



Learn from peers of unmatched skill and expertise. We boast a broad psychology network as well as ISN affiliated clinical facilities that provide on site skill-based practical training and placements.

APAC Accreditation



Discover, grow, and succeed in your career. Our courses are approved by APAC, ready to guide you on your journey to becoming an accredited psychologist in Australia.

Graduate Diploma of Psychological Studies

The Graduate Diploma of Psychological Studies is an APAC approved two-year program that bridges 4 years of Psychology study. If you've completed a degree in another discipline and want to make a career change into psychology, this program is for you.

This course explores areas of psychology such as personality, perception, cognition, learning, motivation, abnormal and developmental psychology. Students leave with a deeper understanding of human behaviour, and the tools needed to apply these teachings to other industries and everyday life.

This is an AQF level 8 program, and graduates are eligible to apply for postgraduate course offerings like the Master of Psychology. Classes are offered at the ISN Psychology campus in Ivanhoe, as well as flexible online offerings.

Entry Requirements

- Domestic students with Australian citizenship or Permanent Residency rights can apply, ISN cannot currently accept applications for international students.
- Completed a bachelor's degree or higher in any discipline or overseas qualifications deemed equivalent by the Australian Education International – National Office of Overseas Skills Recognition (AEI-NOOSR)
- Where this qualification has not been completed in English, students must meet minimum English language proficiency standards for entry to AQF Level 8 qualification (Equivalent to IELTS 6.5 overall with no band less than 6.0)

Career Pathways

This unique two year offering is ideal for those considering fast tracking a career path transition into psychology. Completion of this course positions graduates to move into further study and a pathway to becoming a practicing psychologist, or transfer those skills into related industries like human resources, marketing, and people and culture.

Tuition and Course Structure



This program consists of two years full time study, or the part-time equivalent. The structure is based on four full-time semesters, each with a duration of 12 weeks, and is taught using a contemporary hybrid model that combines online and in-person learning into a world-class package.

The first year consists of eight core units that provide the foundational knowledge required for students to excel in psychological studies. It includes introductions to psychology as a science as well as basic statistics.

The second year consists of six core units, two of which focus on the completion of a major research project or thesis that is the culmination of the learnings from the course.

Tuition fees are payable upfront or through FEE HELP for eligible students. For more information about tuition fees please visit our website, isn.edu.au or contact us on (03) 9008 1600.

Full Time Year One

Semester One

	Unit Name	Credit Points	Tuition Fees
ISNG101	Introduction to Psychology 1	12.5	\$2,560
ISNG102	Introduction to Psychology 2	12.5	\$2,560
ISNG113	Psychological Statistics	12.5	\$2,560
ISNG114	Foundations of Neuroscience	12.5	\$2,560

Semester Two

ISNG201	Psychology Research Methods	12.5	\$2,560
ISNG202	Abnormal Psychology	12.5	\$2,560
ISNG203	Learning and Motivation	12.5	\$2,560
ISNG303	Basics of Psychological Assessment	12.5	\$2,560

100.00

TOTAL AUD \$20,480

*These units are only available once per year. Students beginning their studies at the mid-year intake will take these two units in reverse order.

Full Time Year Two

Semester One

	Unit Name	Credit Points	Tuition Fees
ISN401	Life Span Development and Psychopathology*	12.5	\$3,600
ISN402	Psychological Assessment	12.5	\$3,600
IISN403	Research Methods	12.5	\$3,600
ISN404	Research Thesis 1	12.5	\$3,600

Semester Two

ISN411	Contemporary Professional Psychology*	12.5	\$3,600
ISN412	Research Thesis 2	37.5	\$10,800
		100.00	

TOTAL AUD \$28,800

COURSE TOTAL AUD \$49,280

*These units are only available once per year. Students beginning their studies at the mid-year intake will take these two units in reverse order.

Recommended Part Time Sequence

Year	Semester 1	Semester 2
1	<ol style="list-style-type: none"> 1. ISNG101 Introduction to Psychology 1 2. ISNG113 Psychological Statistics 	<ol style="list-style-type: none"> 1. ISNG201 Psychological Research Methods 2. ISNG203 Learning and Motivation
2	<ol style="list-style-type: none"> 1. ISNG102 Introduction to Psychology 2 2. ISNG114 Foundations of Neuroscience 	<ol style="list-style-type: none"> 1. ISNG202 Abnormal Psychology 2. ISNG303 Basics of Psychological Assessment
3	<ol style="list-style-type: none"> 1. ISN402 Psychological Assessment 2. ISN403 Research Methods 	<ol style="list-style-type: none"> 1. ISN411 Contemporary Professional 2. ISN404 Research Thesis 1
4	<ol style="list-style-type: none"> 1. ISN401 Life Span Development and Psychopathology* 2. ISN412 Research Thesis 2 	

Begin Your Journey at ISN Psychology

Explore examples of our Year One Unit Descriptions

Unit outlines are subject to change and apply only to the first year of the course. Updated outlines will be provided at the start of the semester.

ISNG201

Psychology Research Methods

Unit Description

In Psychology Research Methods, students will be provided with a detailed overview of research methodology and inferential data analysis in psychology research. This unit will critically overview the main research designs used in psychology, and students will be introduced to null hypothesis significance testing and a range of advanced data analysis techniques such as analysis of variance (ANOVA), correlation and regression.

ISNG202

Abnormal Psychology

Unit Description

Abnormal Psychology will introduce students to psychopathology and will focus on several areas including description, classification, epidemiology, aetiology, assessment, and knowledge about intervention. Students will be introduced to the concepts of normality and abnormality, and to the advantages and limitations of the diagnostic and classification systems in order to help them develop an ability to discuss critical issues associated with professional and societal approaches to people experiencing mental illness.

ISNG203

Learning and Motivation

Unit Description

Learning and Motivation explores the basic principles that underpin behaviour. Students will be introduced to the main theories and research underlying learning and how motivation can affect behaviour, with a focus on behaviourist and cognitivist theories. Behavioural experiments in non-human animals will be used to explore fundamental concepts and principles of learning, such as Pavlovian and instrumental conditioning, habituation, sensitisation, motivations, emotion, memory and forgetting. Furthermore, learning and motivation, within the context of understanding and explaining human behaviour and disorders, will also be covered in this unit.

ISNG113

Psychological Statistics

Unit Description

In Psychology Statistics, students will be provided with an introduction to the fundamental areas of statistics as applied to psychology. Topics explored in this unit include: probability and hypothesis testing, descriptive statistics, inferential statistics and, using statistics to make inferences about one, two, or more than two populations. Furthermore, this unit aims to develop students' knowledge and application of current statistical software programs to various psychological research data sets and the ability to calculate and interpret statistical data.

Foundations of Neuroscience

Unit Description

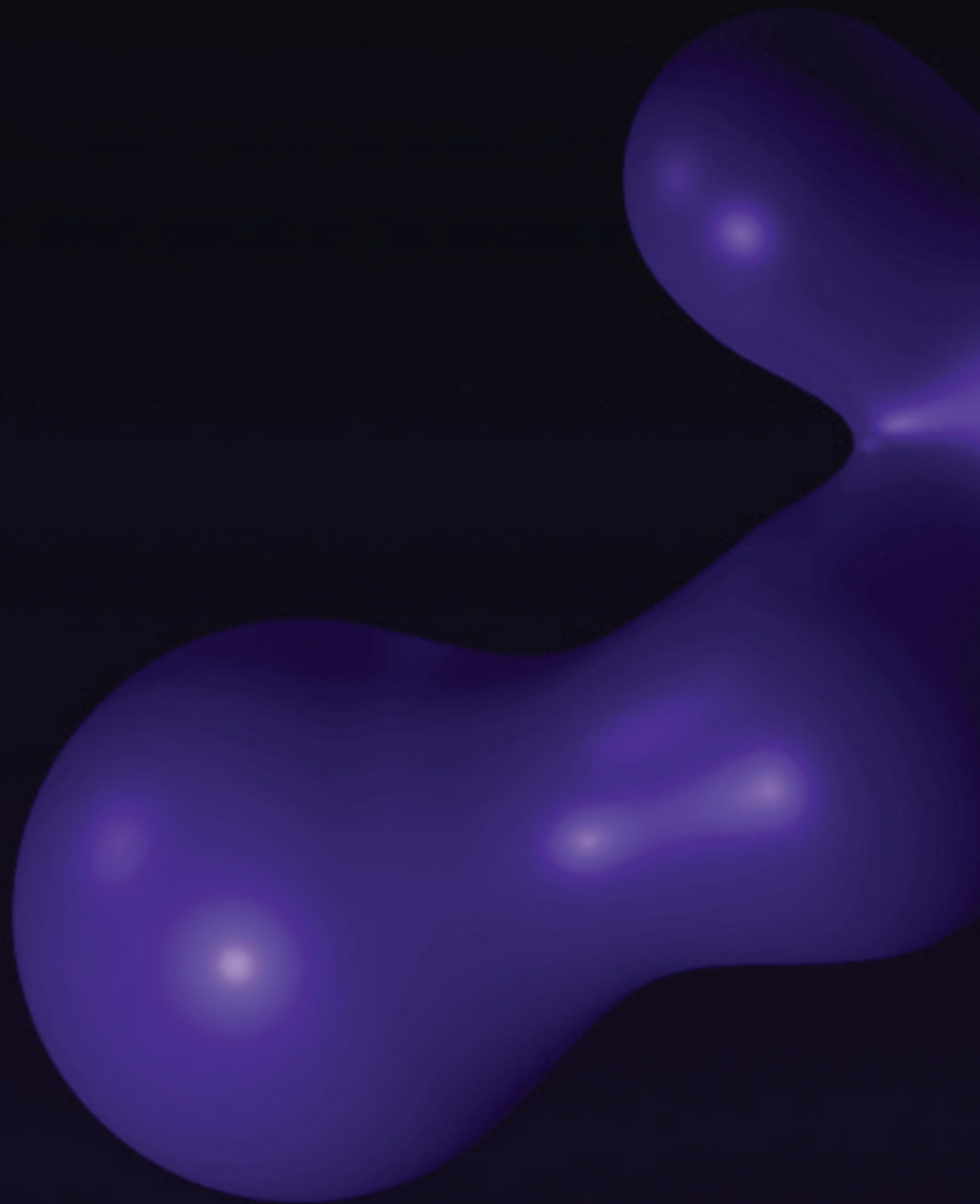
Foundations of Neuroscience explores the functional nervous systems related to sensation, perception, and memory. The biological basis of other complex behaviours such as learning, language and intelligence, emotion, reproduction, and aggression will also be examined within this framework. The relationship between neurobiological and psychological dysfunction will also be considered.






Learning resources and Support


Please review the [Student Support page](#) for information about resources and support available to you.



Contact Us


 (03) 9008 1600

 registrar@isn.edu.au

 isn.edu.au

Let's Get Social

 facebook.com/ISNpsych

 linkedin.com/school/isn-psychology/